



ASSA ABLOY

FS-402-TP Flush Mount

Markar Architectural Products, Inc. a subsidiary of Adams Rite Manufacturing Co.
260 Santa Fe Street, Pomona, CA 91767 • 800-872-3267 • 909-632-2300 • 800-232-6752 fax • www.markar.com

STANDARD FEATURES

Material

6463-T5 aluminum

Finishes

Bright Dipped Anodized

Spring-Loaded Barrel Type Hinge

1/4" diameter stainless steel pin with stainless steel spring mechanism
Torx tip cap to adjust spring tension
Long-life split nylon bearings
28 bearing surfaces

Torx Adjusting Screw

Adjust tension on door to close tightly for out-swinging ADA compliance

Mounting Hardware

Concealed by cover caps

Locking Security Covers

Bright dipped aluminum

Capacity

Close door weighing up to 80lbs.

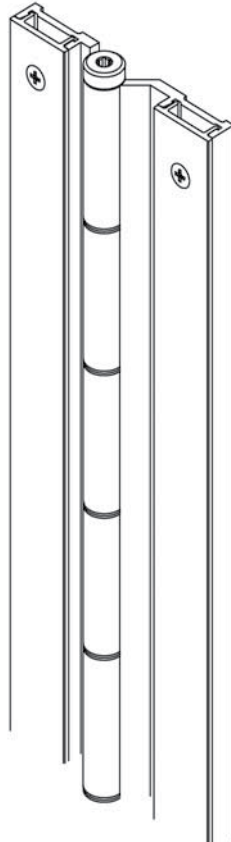
Size

54"

Non-handed

Use the same hinge for right- or left-handed doors

For Doors over 3'0" consult factory



OPTIONAL FEATURES

Features

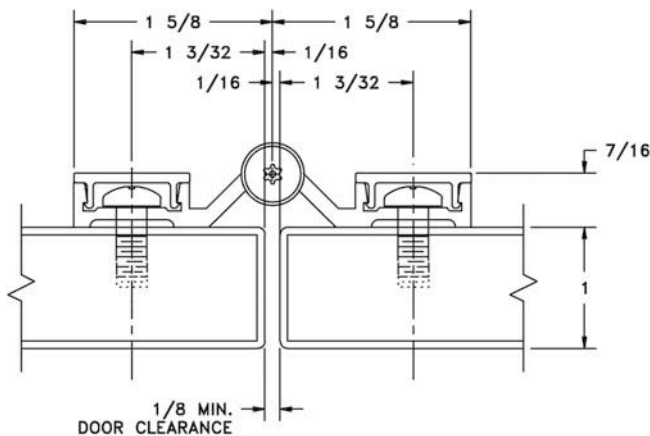
Custom lengths - specify in inches
Custom hole pattern
Lift-up safety feature

Fasteners

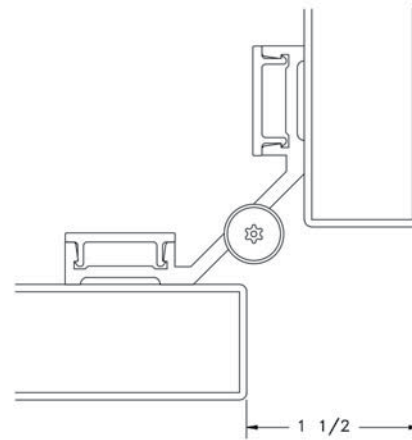
Tamper-proof security screws

USA patent no. 4823437
Canadian patent no. 1303804

Specify Markar to create the total finished look that your high-quality toilet partition deserves. The Markar continuous spring hinge gives a clean, finished look while virtually eliminating the "sight line" that multi-part systems cause. Continuous hinges also give complete support along the entire length of the partition door.



DOOR CLOSED



DOOR OPEN 90°