



ASSA ABLOY

# FM-3500 Edge Mount Security Hinge

Markar Architectural Products, Inc. a subsidiary of Adams Rite Manufacturing Co.  
260 Santa Fe Street, Pomona, CA 91767 • 800-872-3267 • 909-632-2300 • 800-232-6752 fax • www.markar.com

## STANDARD FEATURES

### Material

Heavy-duty 12 Gauge (.105") stainless steel

### Finishes

US32D Satin Stainless Steel (630)

### Abuse Testing

Exceeds ASTM-F-1450-A

### Cycle Testing

Grade 1  
ANSI/BHMA Standard A156.26

### Hospital Tip Standard

### Mounting Hardware

12-24 S.S. Phillips F.H.M.S.

### Capacity

Supports weights up to 900lbs.  
4'0" maximum door width

### Sizes

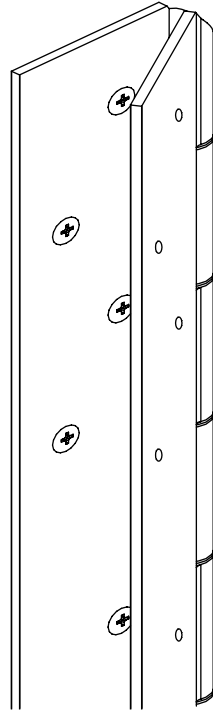
6'8", 7'0", 7'2", 8'0", 10'0"

### Hole Pattern

Symmetrically templated  
Non-handed

### Barrel Type Hinge

1/4" diameter stainless steel pin  
Long-life split nylon bearings



### Fire Rating

3 hours- hollow metal doors mounted singly  
90 minutes- hollow metal and composite core wood fire doors  
20 minutes- wood doors



Classified in accordance with UBC code standard 7-2 for positive pressure



fire-rated label

## OPTIONAL FEATURES

### Finishes

US32 Bright Stainless Steel (629)  
Scratch-Resistant Powder Coated Paint

### Hole Patterns

Plug weld hole pattern  
Custom hole pattern

### Mounting Hardware

12-24 S.S. Torx with security pin  
Security studs

### Other Features

Custom lengths – specify in inches  
Dutch door hinges – suffix hinge "DD"  
Raised barrel  
Special sheared leaf

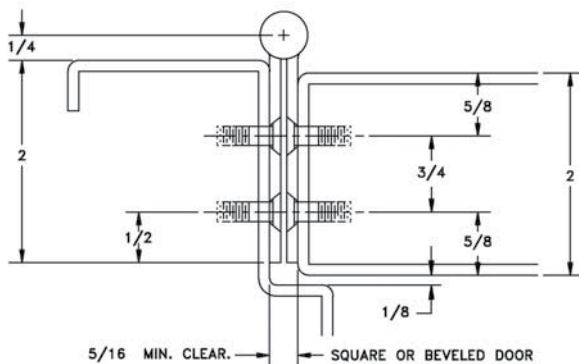
### Electrical Modifications

Exposed switch with adjusting screw – suffix hinge "ES"  
Current transfer- 4 or 8, 28 gauge wires- suffix hinge "CE-4D" or "CE-8D"  
Current Transfer Prep - suffix hinge "CTP"

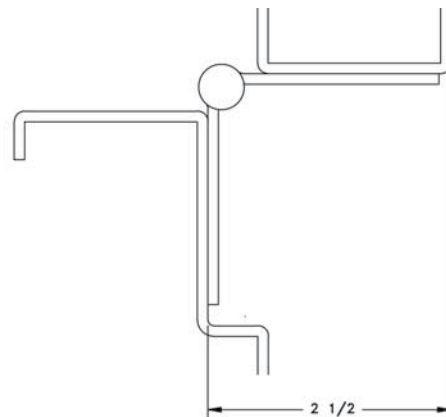
### ElectroLYNX™

EL-8 (8 wire), EL-12 (12 wire)

This edge mount pin and barrel type hinge is fabricated with extra-heavy duty components for use on high traffic, high abuse doors. The hinge is specially designed and well suited for correctional facilities and other high security locations using 2" thick swing-type doors. Prison doors, gates, extremely tall doors and extra heavy doors are all good candidates for Markar's 3500 Security Hinge.



DOOR CLOSED



DOOR OPEN 90°