



ASSA ABLOY

HG-326 Swing Clear Hinge Guard

Markar Architectural Products, Inc. a subsidiary of Adams Rite Manufacturing Co.
260 Santa Fe Street, Pomona, CA 91767 • 800-872-3267 • 909-632-2300 • 800-232-6752 fax • www.markar.com

STANDARD FEATURES

Material

Heavy-Duty 14 Gauge stainless steel

Finishes

US32D Satin Stainless Steel (630)

Cycle Testing

Grade 1

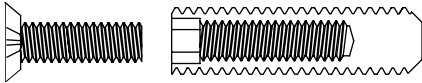
ANSI/BHMA Standard A156.26

Mounting Hardware

No exposed mounting fasteners when closed

Universal screw pack

AdjustaScrews for correcting frame fit problems up to 3/8"



Capacity

Supports weights up to 600lbs.

4'0" maximum door width

Sizes

6'8", 7'0", 7'2", 8'0", 10'0"

Hole Pattern

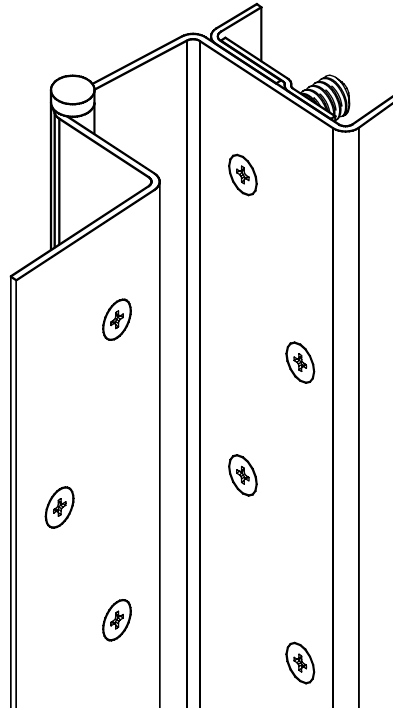
Symmetrically templated

Non-handed

Barrel Type Hinge

1/4" diameter stainless steel pin

Long-life split nylon bearings



OPTIONAL FEATURES

Finishes

US32 Bright Stainless Steel (629)

Scratch-Resistant Powder Coated Paint

Door Edge

Specify square or beveled edge when ordering

Other Features

Custom lengths – specify in inches

Custom hole pattern

Tamper-proof security screws

Dutch door hinges- suffix hinge "DD"

Hospital tips- suffix "HT"

Medical Bearings

Raised barrel

Special sheared leaf

Electrical Modifications

Current Transfer Prep - "CTP" 4612-SC only

Fire Rating

3 hours- hollow metal doors mounted singly

90 minutes- hollow metal and composite core wood fire doors

20 minutes- wood doors

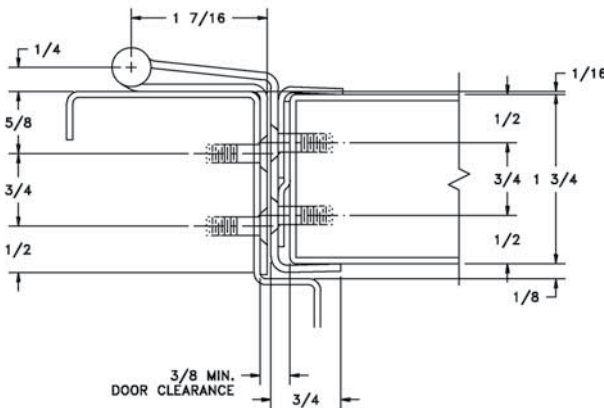


Classified in accordance with UBC code standard 7-2 for positive pressure

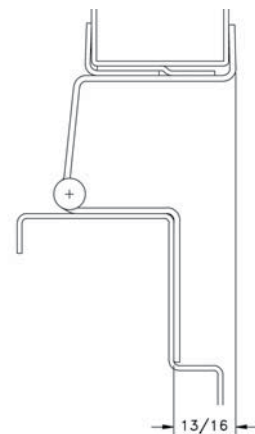


fire-rated label

This unique design answers the problem of aligning doors and locking mechanisms crucial in any security application. It also solves the problem when adjusting doors where frames are not installed plumb or properly aligned. The incorporated edge guard protects the door from unsightly dents and gouges while also protecting the hinge from vandalism. The proper alignment of the door to the frame will allow your closers, panics, magnetic locks, electronic strikes and automatic operators to assist you in meeting all your life safety code requirements



DOOR CLOSED



DOOR OPEN 90°