



ASSA ABLOY

# HG-310 Swing Clear Hinge Guard

Markar Architectural Products, Inc. a subsidiary of Adams Rite Manufacturing Co.  
260 Santa Fe Street, Pomona, CA 91767 • 800-872-3267 • 909-632-2300 • 800-232-6752 fax • www.markar.com

## STANDARD FEATURES

### Material

Heavy-duty 14 Gauge stainless steel

### Finishes

US32D Satin Stainless Steel (630)

### Cycle Testing

Grade 1

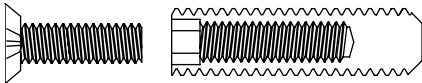
ANSI/BHMA Standard A156.26

### Mounting Hardware

No exposed mounting fasteners when closed

Universal screw pack

AdjustaScrews for correcting frame fit problems up to 3/8"



### Capacity

Supports weights up to 600lbs.

4'0" maximum door width

### Sizes

6'8", 7'0", 7'2", 8'0", 10'0"

### Hole Pattern

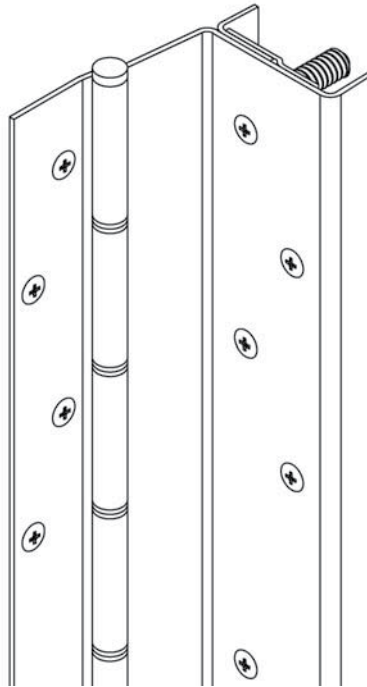
Symmetrically templated

Non-handed

### Barrel Type Hinge

1/4" diameter stainless steel pin

Long-life split nylon bearings



### Fire Rating

3 hours - hollow metal doors mounted singly

90 minutes - hollow metal and composite core wood fire doors

20 minutes - wood doors



Classified in accordance with UBC code standard 7-2 for positive pressure



fire-rated label

## OPTIONAL FEATURES

### Finishes

US32 Bright Stainless Steel (629)

Scratch-Resistant Powder Coated Paint

### Other Features

Custom lengths - specify in inches

Custom hole patterns

Dutch door hinges - suffix hinge "DD"

Hospital tips - suffix hinge "HT"

Medical Bearings

Swing clear hinges for ADA compliance

Raised barrel

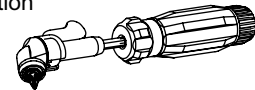
Special sheared leaf

### Fasteners

Tamper-proof security screws

### Tools

MTSP-100 Right angle skewdriver for ease of installation

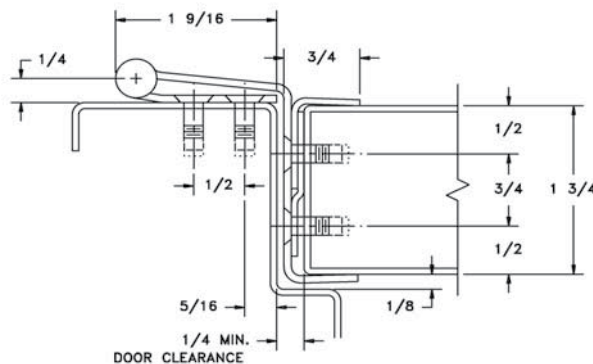


### Electrical Modifications

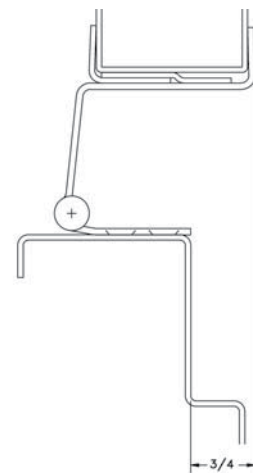
Current Transfer Prep - suffix hinge "CTP"

(4612-SC)

The ADA-compliant barrel-type hinge is used on operating room doors to swing the door out of the opening when moving equipment in and out. The hinge guard also protects the door in the half-open position.



DOOR CLOSED



DOOR OPEN 90°