



ASSA ABLOY

FS/SC-309 Full Surface Swing Clear

Markar Architectural Products, Inc. a subsidiary of Adams Rite Manufacturing Co.
260 Santa Fe Street, Pomona, CA 91767 • 800-872-3267 • 909-632-2300 • 800-232-6752 fax • www.markar.com

STANDARD FEATURES

Material

Heavy-duty 14 Gauge stainless steel

Finishes

US32D Satin Stainless Steel (630)

Cycle Testing

Grade 1

ANSI/BHMA Standard A156.26

Mounting Hardware

No exposed mounting fasteners when closed

Universal screw pack

Capacity

Supports weights up to 600lbs.

4'0" maximum door width

Sizes

6'8", 7'0", 7'2", 8'0", 10'0"

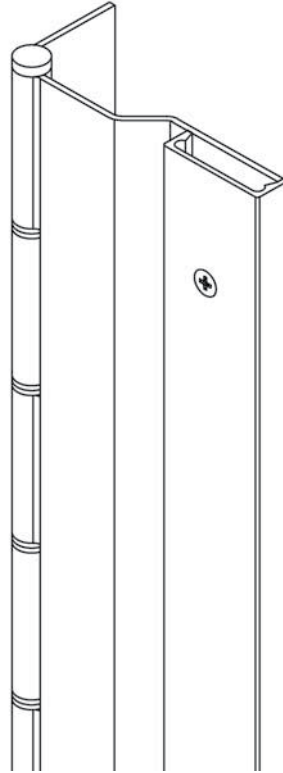
Decorative Fastener Cover

Brushed aluminum

Barrel Type Hinge

1/4" diameter stainless steel pin

Long-life split nylon bearings



OPTIONAL FEATURES

Finishes

US32 Bright Stainless Steel (629)

Scratch-Resistant Powder Coated Paint

Bright Dipped Fastener Covers

Other Features

Custom lengths - specify in inches

1 3/4" aluminum sleeve bolts

Dutch door hinges - suffix hinge "DD"

Hospital tips - suffix hinge "HT"

Medical Bearings

Swing clear hinges for ADA compliance

Lead lined cover with 1/16" lead lining -

suffix hinge "LL"

Fire Rating

3 hours- hollow metal doors mounted singly

90 minutes- hollow metal and composite core wood fire doors

20 minutes- wood doors

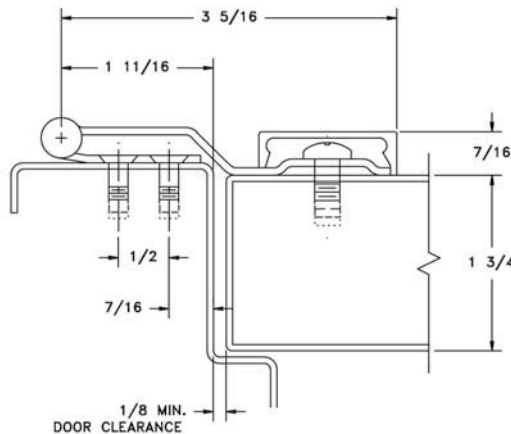


Classified in accordance with UBC code standard 7-2 for positive pressure

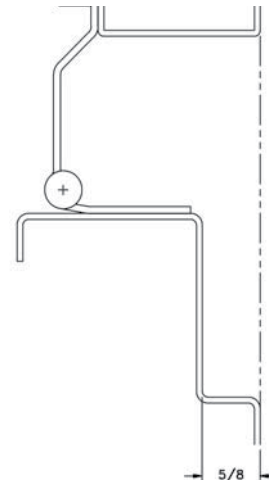


fire-rated label

This barrel-type hinge is used to ensure that a door opened to a 90-degree angle is removed from the opening. This hinge will mount on a 1 3/4" face, and is especially useful for ADA upgrade work and lead lined door conversion projects.



DOOR CLOSED



DOOR OPEN 90°