



ASSA ABLOY

# EG-T-308 Edge Guard

Markar Architectural Products, Inc. a subsidiary of Adams Rite Manufacturing Co.  
260 Santa Fe Street, Pomona, CA 91767 • 800-872-3267 • 909-632-2300 • 800-232-6752 fax • www.markar.com

## STANDARD FEATURES

### Material

Heavy-duty 16 Gauge stainless steel

### Finishes

US32D Satin Stainless Steel (630)

### Mounting Hardware

No exposed mounting fasteners when closed

### Sizes

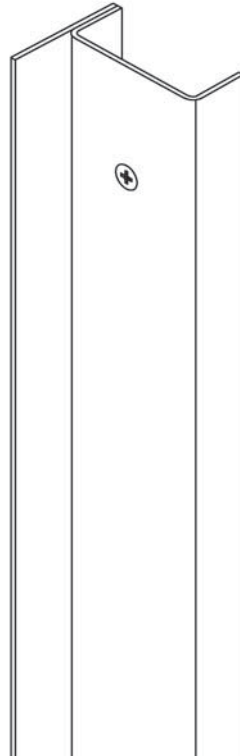
6'8", 7'0", 7'2", 8'0", 10'0"

### Hole Pattern

Symmetrically templated  
Non-handed

### Door Edge

Specify square or beveled edge when ordering



## OPTIONAL FEATURES

### Finishes

US32 Bright Stainless Steel (629)  
Scratch-Resistant Powder Coated Paint

### Hardware Cutouts

(requires handing information)

Flush bolts  
ASA strike  
Deadlock strike and latch  
86 edge and ASA lock  
Hospital latch  
161 cutout

**Measurements should be given from top of door to centerline of cut-out with handing.**

Custom Cutouts

### Other Features

Custom lengths – specify in inches  
Custom cutouts  
Custom hole pattern for lead-lined doors  
Dutch door application – suffix edge guard "DD"  
Lead lined astragal with 1/16" lead lining - suffix hinge "LL"

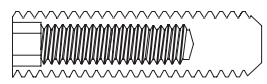
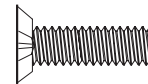
### Fasteners

Tamper-proof security screws  
AdjustaScrew fasteners - suffix edge guard "AS"



Classified in accordance with UBC code standard 7-2 for positive pressure

**MAY NOT APPLY TO ALL WOOD DOORS IN ACCORDANCE WITH UBC STANDARD CODE 7-2. PLEASE CONSULT FACTORY FOR SPECIFIC WOOD DOOR APPLICATIONS.**

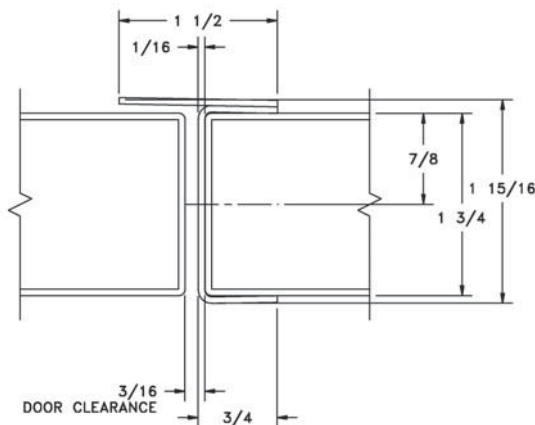


fire-rated label

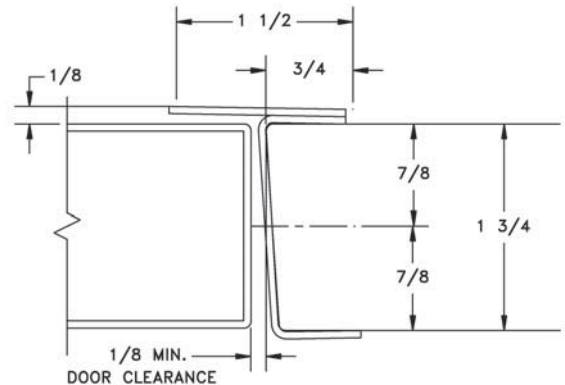
**Markar's Patented Adjusta Screw assemblies are now approved for use on labeled doors.**

**US PATENT NUMBER 5,943,824**

The integral overlapping astragal of the EG-T-308 provides an additional level of security by acting as a latch protector. It is ideal for exterior pairs or doors that require protection from vandalism.



SQUARE EDGE



BEVELED EDGE