



ASSA ABLOY

# FS-202 Full Surface Flush Mount

Markar Architectural Products, Inc. a subsidiary of Adams Rite Manufacturing Co.  
260 Santa Fe Street, Pomona, CA 91767 • 800-872-3267 • 909-632-2300 • 800-232-6752 fax • www.markar.com

## STANDARD FEATURES

### Material

Heavy-duty 14 Gauge 1012 carbon steel

### Finishes

Gray Powder Coat Primer

### Cycle Testing

Grade 1

ANSI/BHMA Standard A156.26

### Mounting Hardware

No exposed mounting fasteners

### Capacity

Supports weights up to 600lbs.

4'0" maximum door width

### Sizes

6'8", 7'0", 7'2", 8'0", 10'0"

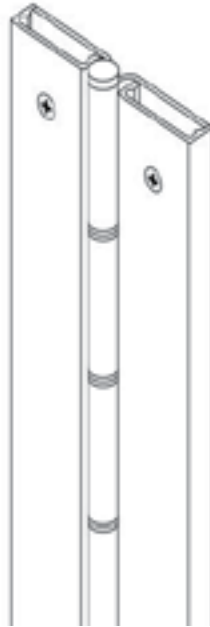
### Decorative Fastener Covers

Aluminum

### Barrel Type Hinge

1/4" diameter stainless steel pin

Long-life split nylon bearings



## OPTIONAL FEATURES

### Finishes

Scratch-Resistant Powder Coated Paint

Bright Dipped Fastener Covers

### Other Features

Custom lengths - specify in inches

1 3/4" aluminum sleeve bolts

Dutch door hinges - suffix hinge "DD"

Hospital tips - suffix hinge "HT"

Raised barrel

Lead-lined cover with 1/16" lead lining -

suffix hinge "LL"

Medical Bearings - suffix hinge "MB"

### Fire Rating

3 hours- hollow metal doors mounted singly

90 minutes- hollow metal and composite core wood fire doors

20 minutes- wood doors

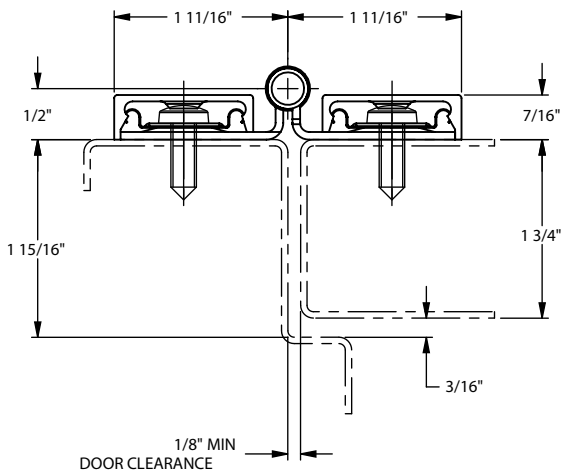


Classified in accordance with UBC  
code standard 7-2 for positive pressure

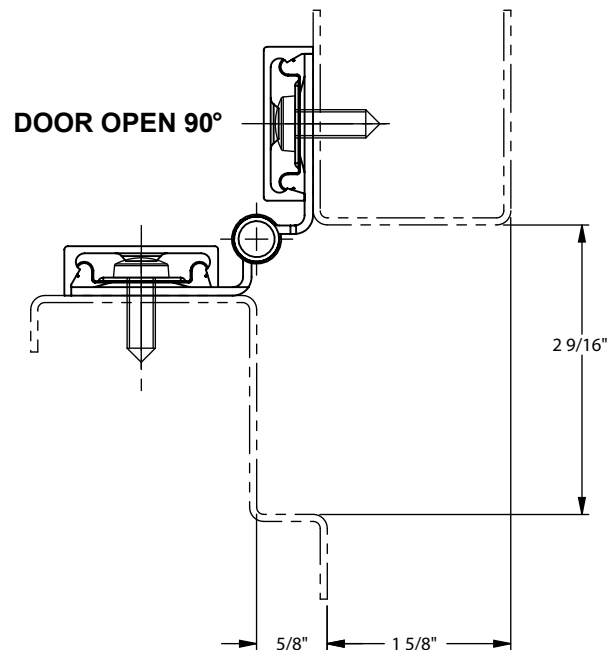


fire-rated label

For flush doors. This surface-mounted pin & barrel type continuous hinge can be used to repair both fire labeled and non-labeled doors that have very tight clearances.



DOOR CLOSED



DOOR OPEN 90°