



ASSA ABLOY

FS-201 Full Surface 1/8" Inset

Markar Architectural Products, Inc. a subsidiary of Adams Rite Manufacturing Co.
260 Santa Fe Street, Pomona, CA 91767 • 800-872-3267 • 909-632-2300 • 800-232-6752 fax • www.markar.com

STANDARD FEATURES

Material

Heavy-duty 14 Gauge 1012 carbon steel

Finishes

Gray Powder Coat Primer

Cycle Testing

Grade 1

ANSI/BHMA Standard A156.26

Mounting Hardware

No exposed mounting fasteners

Capacity

Supports weights up to 600lbs.

4'0" maximum door width

Sizes

6'8", 7'0", 7'2", 8'0", 10'0"

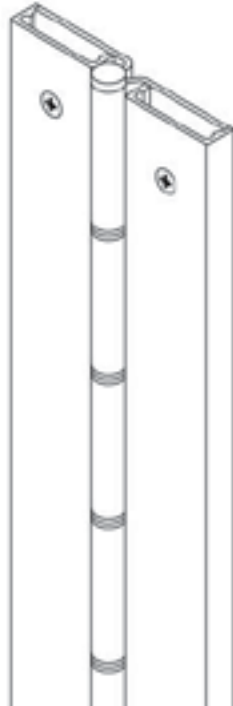
Decorative Fastener Covers

Aluminum

Barrel Type Hinge

1/4" diameter stainless steel pin

Long-life split nylon bearings



OPTIONAL FEATURES

Finishes

Scratch-Resistant Powder Coated Paint

Bright Dipped Fastener Covers

Other Features

Custom lengths - specify in inches

1 3/4" aluminum sleeve bolts

Dutch door hinges - suffix hinge "DD"

Hospital tips - suffix hinge "HT"

Raised barrel

Lead-lined cover with 1/16" lead lining - suffix hinge "LL"

Medical Bearings - suffix hinge "MB"

Fire Rating

3 hours- hollow metal doors mounted singly

90 minutes- hollow metal and composite core wood fire doors

20 minutes- wood doors

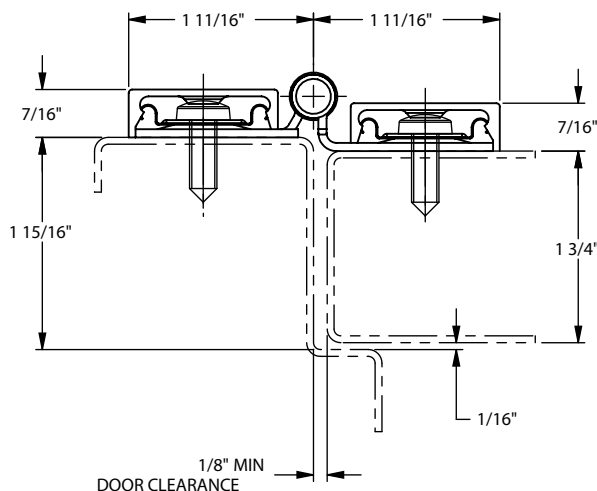


Classified in accordance with UBC code standard 7-2 for positive pressure

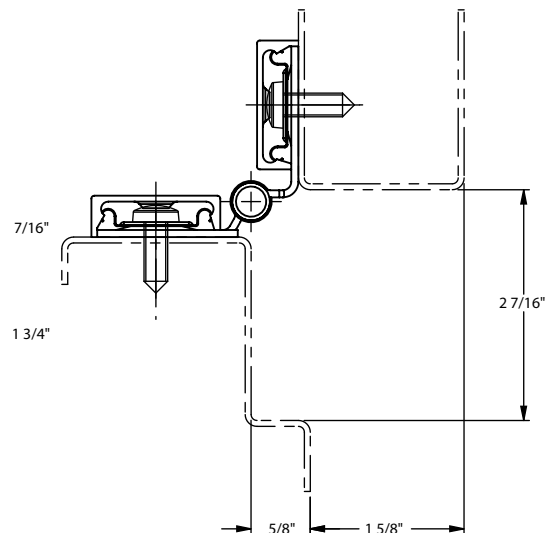


fire-rated label

For 1/8" inset doors. This surface-mounted pin & barrel type continuous hinge can be used to repair both fire labeled and non-labeled doors that have very tight clearances. The hinge has a built-in 1/8" offset to assist in weather seal and sound barrier areas.



DOOR CLOSED



DOOR OPEN 90°