



ASSA ABLOY

# HS-103 Half Surface

Markar Architectural Products, Inc. a subsidiary of Adams Rite Manufacturing Co.  
260 Santa Fe Street, Pomona, CA 91767 • 800-872-3267 • 909-632-2300 • 800-232-6752 fax • www.markar.com

## STANDARD FEATURES

### Material

6063-T6 aluminum

### Finishes

Satin Anodized (628)  
Dark Bronze Anodized (313)

### Cycle Testing

Grade 2  
ANSI/BHMA Standard A156.26

### Mounting Hardware

No exposed mounting fasteners when closed  
Universal screw pack

### Capacity

Supports weights up to 600lbs.  
4'0" maximum door width

### Sizes

6'8", 7'0", 7'2", 8'0"

### Locking Security Covers

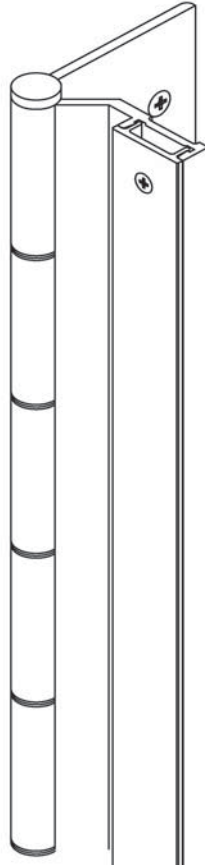
Brushed aluminum finish

### Hole Pattern

Symmetrically templated  
Non-handed

### Barrel Type Hinge

1/4" diameter Teflon-coated stainless steel pin  
Long-life split nylon bearings



## OPTIONAL FEATURES

### Finishes

Light Bronze Anodized (311)  
Black Anodized (315)  
Scratch-Resistant Powder Coated Paint  
Satin Anodized

### Other Features

Custom lengths - specify in inches  
Custom hole pattern  
Dutch door hinges - suffix hinge "DD"  
Hospital tips - suffix hinge "HT"  
Lead lined cover with 1/16" lead lining - suffix hinge "LL"

### Fasteners

Tamper-proof security screws  
1 3/4" aluminum sleeve bolts

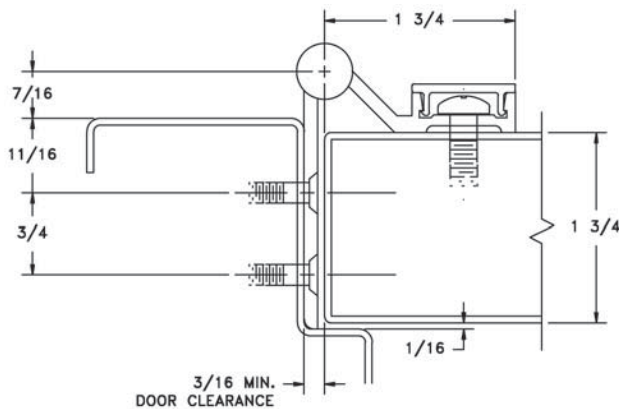
### Electrical Modifications

Current transfer - 4 or 8 28 gauge wires - suffix hinge "CE4" or "CE8"  
Current Transfer Prep (frame leaf only) - suffix hinge "CTP"

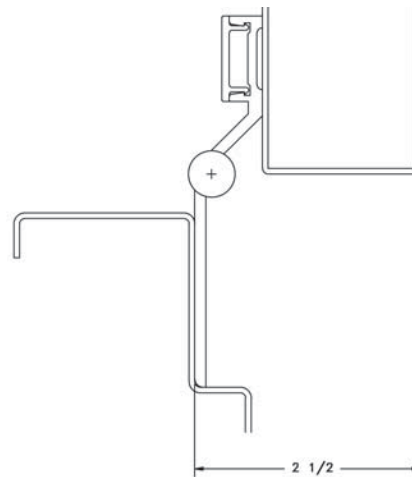
### ElectroLYNX™

EL-8 (8 wire), EL-12 (12 wire)

This half-surface aluminum pin & barrel type hinge can be used to repair doors that need the frame reinforced. This hinge can also be used on openings that have too large a gap between the door and frame. The hinge is surface edge mounted on the door frame.



DOOR CLOSED



DOOR OPEN 90°