



**ASSA ABLOY**

# FM-100 Edge Mount

Markar Architectural Products, Inc. a subsidiary of Adams Rite Manufacturing Co.  
260 Santa Fe Street, Pomona, CA 91767 • 800-872-3267 • 909-632-2300 • 800-232-6752 fax • www.markar.com

## STANDARD FEATURES

### Material

6063-T6 aluminum

### Finishes

Satin Anodized (628)  
Dark Bronze Anodized (313)

### Cycle Testing

Grade 2  
ANSI/BHMA Standard A156.26

### Mounting Hardware

No exposed mounting fasteners when closed  
Universal screw pack

### Capacity

Supports weights up to 600lbs.  
4'0" maximum door width

### Sizes

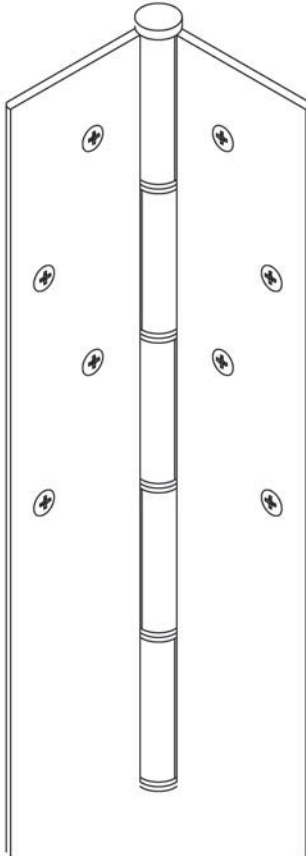
6'8", 7'0", 7'2", 8'0", 10'0"

### Hole Pattern

Symmetrically templated  
Non-handed

### Barrel Type Hinge

1/4" diameter Teflon-coated stainless steel pin  
Long-life split nylon bearings



## OPTIONAL FEATURES

### Finishes

Light Bronze Anodized (311)  
Black Anodized(315)  
Scratch-Resistant Powder Coated Paint

### Other Features

Custom lengths - specify in inches  
Custom hole pattern  
Dutch door hinges - suffix hinge "DD"  
Hospital tips - suffix hinge "HT"

### Fasteners

Tamper-proof security screws

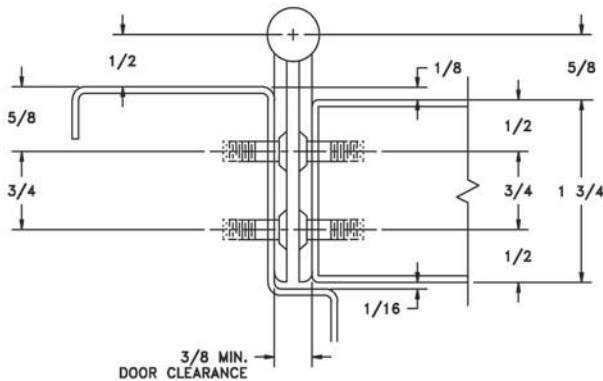
### Electrical Modifications

Exposed switch with adjusting screw - suffix hinge "ES"  
Current transfer - 4 or 8 28 gauge wires - suffix hinge "CE4" or "CE8"  
Current Transfer Prep - suffix hinge "CTP"

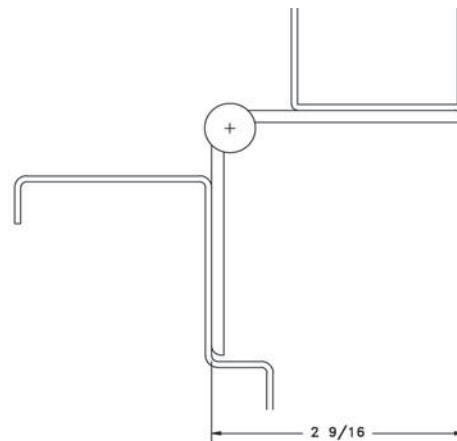
### ElectroLYNX™

EL-8 (8 wire), EL-12 (12 wire)

This door-edge mounted aluminum pin & barrel type hinge is extruded using 30% more aluminum than most geared hinges, giving it exceptional strength and durability. This product is specified in lieu of pivots or butt hinges due to its unique design which distributes the weight of the door down the entire length of the hinge.



**DOOR CLOSED**



**DOOR OPEN 90°**